

Price County Child Care Directory



July 2020

PRICE COUNTY CHILD CARE DIRECTORY

High quality child care meets a range of children's early educational and social needs. Child care services have been credited for responding to the need for prevention, identification and remediation of health, social, and learning problems during the child's first years.

It is expensive to provide a high quality child care program. Caregivers must be well trained and dedicated to their commitment. They must maintain low staff/child ratios. They must have insurance to protect their business and the children in their care.



SOME THINGS TO HELP YOU CHOOSE CHILD CARE

1. **MAKE AN APPOINTMENT** with more than one child care center director/family day care provider and visit their centers.
2. **TALK WITH THE DIRECTOR** about daily routines, meals and snacks, and staff qualification. Does the center have liability/accident insurance? How does the staff discipline the children? How do staff and parents exchange information?
3. **LOOK AT THE FACILITIES.** Are they safe and sanitary? Is there ample room for indoor and outdoor play and rest? Are there enough stimulating toys for the number of children – blocks, art, housekeeping, books, table toys, puzzles, puppets, etc.?
4. **OBSERVE THE STAFF.** Are there enough adults to adequately care for the children? What discipline techniques do they actually use? Do they show respect for each child? Do they challenge and stimulate the children's creativity, language skills, social skills, intellectual skills?
5. **OBSERVE THE CHILDREN.** Are most of the children actively involved in their work/play? Are they comfortable with each other? Is there a balance of active and quiet, restful work going on?
6. **LISTEN TO YOUR FEELINGS.** Are you comfortable in this setting? Do you feel confidence in the staff? Do you feel your child's needs will be adequately met? Do you feel your child will be safe? Will you feel at ease to leave your child here and be able to concentrate on your own work?

*Child care certification files are public record and parents are invited to review files for any concerns about a provider's child care program. An appointment to review a provider's file can be scheduled with at least a 2 day notice.



Visit the YoungStar Quality Rating website for more information about child care providers

<https://dcf.wisconsin.gov/youngstar/parents>

What is YoungStar?

YoungStar is a program of the Department of Children and Families created to improve the quality of child care for Wisconsin children. YoungStar:

- Evaluates and rates the quality of care given by child care providers.
- Helps parents choose the best child care for their kids.
- Supports providers with tools and training to deliver high-quality early care.
- Sets a consistent standard for child care quality.

YoungStar Tiered Reimbursement

The goal of YoungStar is to improve the quality of child care and reward high-quality providers by:

- Establishing a 5 Star quality rating system for all child care providers.
- Paying Wisconsin Shares quality bonuses to 4 Star and 5 Star child care providers.

As of July 1, 2012, all providers who accept Wisconsin Shares subsidy payments are required to participate in YoungStar. You can see if your provider is participating by clicking on the "Search for YoungStar Child Care" button at the website.

Wisconsin Shares subsidy reimbursement levels are based on the child care provider's star rating in the following manner:

5 Star Provider ★★☆☆★ Meets highest levels of quality standards. Wisconsin Shares subsidy reimbursement is increased by 25%.

4 Star Provider ★★☆☆ Meets elevated levels of quality standards. Wisconsin Shares subsidy reimbursement is increased by 10%.

3 Star Provider ★☆☆ Meets proficient levels of quality standards. Wisconsin Shares subsidy reimbursement remains the same.

2 Star Provider ★☆☆ Meets health and safety standards. Wisconsin Shares subsidy reimbursement is reduced by 5%.

1 Star Provider ★☆☆ Not eligible for Wisconsin Shares subsidy reimbursement. These providers' child care licenses or certifications have been revoked, denied, or suspended, or their Wisconsin Shares payments have been ended due to fraud or suspected fraud.

Note: Any increase in Wisconsin Shares reimbursement rates due to YoungStar rating is applied **after** the parent co-payment is taken out of the Wisconsin Shares payment.



PARK FALLS LICENSED CHILD CARE PROVIDERS

Licensed By:
Dept. of Health and Family Services–Regional Office

Nannie's Day Care Center

YoungStar Rating ★ ★ ★

Becky Wegner
1181 North First Avenue
Park Falls, WI 54552
715-762-2418

Capacity: 20
Enrollment Requirements:
6 weeks – 13 years

Operating Schedule:
Monday – Friday
6:30 a.m. – 5:30 p.m.
Saturday by appointment
January – December

Saint Anthony Catholic Day Care

YoungStar Rating 

Chealyn Damrow, Director

276 S. 5th Avenue

Park Falls, WI 54552

715-762-2024 Ext. 5

Website: stanthonysparkfalls.com

Capacity: Full-time 10 Part-time 21

Enrollment Requirements:

6 weeks – 11 years

Operating Schedule:

Monday – Friday

6:00 a.m. – 5:30 p.m.

January – December



Creative Corner Family Daycare

YoungStar Rating 

Jennifer Brummer

140 Case Ave

Park Falls, WI 54552

262-287-3661

Capacity: 8

Enrollment Requirements:

0-11 years

Operating Schedule:

Monday- Friday

6:30am-5:30pm

January – December

Chequamegon Early Learning Center

YoungStar Rating ★★

Sarah Lynch, Director
400 9th St N
Park Falls, WI 54552
715-762-2474

Capacity: 20
Enrollment Requirements:
2 months - 6 years

Operating Schedule:
Monday- Friday
7:00am-5:30pm
January – December

PHILLIPS LICENSED CHILD CARE PROVIDERS

Licensed By:

Dept. of Health and Family Services-Regional Office

Precious Hearts Daycare

YoungStar Rating ★★

Nycola Williams
W6692 County Rd. D
Phillips, WI 54555
715-339-6882

Capacity: 8
Enrollment Requirements:
6 weeks – 13 years

Operating Schedule:
Monday - Friday
7:00 a.m. – 7:00 p.m.

Dinosaur Land Day Care Center

Dedee Schillinger
N9606 West View Road
Phillips, WI 54555
715-339-4945

Capacity: 8
Enrollment Requirements:
1 year – 8 years

Operating Schedule:
Monday – Thursday
7:30 a.m. – 5:00 p.m.
June - August

Monday – Thursday
7:30 a.m. – 5:00 p.m.
Friday
7:30 a.m. – 4:30 p.m.
September – May



Little Tykes Family Day Care

YoungStar Rating ★ ★

Carrie Shipley
W7486 Harvest Lane
Phillips, WI 54555
715-339-3387

Capacity: 8
Enrollment Requirements:
6 weeks – 12 years

Operating Schedule:
Monday – Sunday
6:30 a.m. – 6:30 p.m.
January – December

Phillips Community Day Care Center

YoungStar Rating ★★

Dominique Kleinhans-Chastain, Director

386 Cherry Street

Phillips, WI 54555

715-339-2466

Capacity: 29

Enrollment Requirements:

0 weeks – 13 years

Operating Schedule:

Monday – Friday

6:30 a.m. – 5:30 p.m.

January – December



Family Forum Head Start Center #10

YoungStar Rating ★★★★★

Janet Hoffman, Director

400 Turner St.

PO Box 70

Phillips, WI 54555

715-339-2419

Capacity: 20

Enrollment Requirements

3-5 years

Operating Schedule:

Monday-Friday

7:15 a.m. – 5:15 p.m.

September – June

Early Head Start

Year Round

Birth-35 months

Woodland Critter's Daycare

YoungStar Rating ★ ★

Tori Riley
N7208 Dunn Road
Phillips, WI 54555
715-339-6589

Capacity: 8
Enrollment Requirements:
6 weeks – 13 years

Operating Schedule:
Monday – Friday
5:00 a.m. – 5:00 p.m.
January – December



Friendship Village

YoungStar Rating ★ ★

Lorraine Kiefer, Director
864 N Lake Ave
Phillips, WI 54555
715-339-3133

Enrollment Requirements:
1 week – 13 years

Operating Schedule:
Monday – Friday
6:30 a.m. – 5:30 p.m.
January – December

PHILLIPS CERTIFIED CHILD CARE PROVIDERS

Certified By:

Price County Department of Health & Human Services

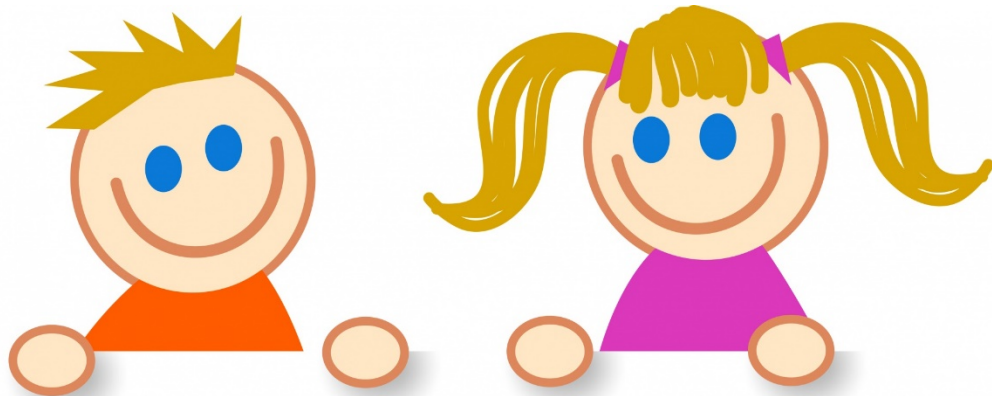
Carrie's Corner Care

YoungStar Rating ★ ★

Carrie Setterman
554 S. Lake Avenue
Phillips, WI 54555
715-780-0017

Capacity: 6
Enrollment Requirements:
6 weeks – 13 years

Operating Schedule:
Monday – Friday
4:30 a.m. – 7:30 p.m.
January – December



FOR YOUR INFORMATION...WHAT IS...?

WISCONSIN STATE LAW (48.65): No person shall for compensation, provide care and supervision for four or more children under the age of seven for less than 24 hours a day unless he or she obtains a license to operate a day care center from the Department.

COUNTY CERTIFIED: A person who has met the minimum requirements to provide child care for a maximum of three children under the age of seven, not including the provider's own children: (Under certain circumstances, up to 6 children may be accepted. Contact Human Services for more information.)

- a) Minimum of 15 hours of child care training.
- b) Minimum of two home visits by the county agency.
- c) Health forms and references on file.

STATE LICENSED FAMILY DAY CARE: A person who cares for eight or less children and has met Health and Family Services' rules and regulations:

- a) Minimum of 40 hours specialized training.
- b) Meets health, safety, and program requirements.
- c) Licensing visit every six months.

STATE LICENSED GROUP DAY CARE: A day care center that cares for nine or more children and has met Health and Family Services' rules and regulations:

- a) Primary child care worker has attended a minimum of 80 hours of specialized training and other staff a minimum of 40 hours.
- b) Meets health, safety, and program requirements.
- c) Licensing every two years.

For information about Child Care Licensing contact:

*Health and Family Services
Division of Children and Family Services
P.O. Box 697
Rhineland, WI 54501
715-365-2500*

For information about Child Care Certification or
Child Care Resources and Referral contact:

*Northwest Connection Family Resources
15896 W. 3rd St.
Hayward, WI 54843
1-800-733-KIDS*

Provides referrals for child care and is a resource for child care providers. Serves as a bridge to link families, child care providers and communities.



Parenting Information

“Just in Time Parenting” newsletters are available for parents of children newborn to five years old.

Commercial free – research based newsletters can be automatically delivered to your inbox. The newsletters include links to podcasts, videos, and other resources. They are also mobile device ready.

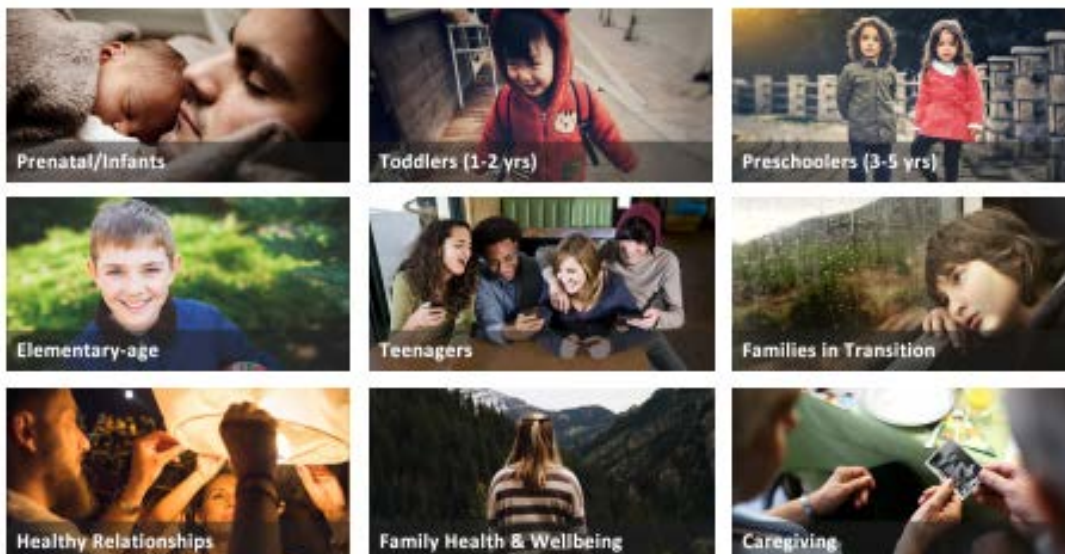
There is no charge for this great resource. All you need to sign up is an email, your child’s birthdate and a zip code. Check it out today.

“Just in Time Parenting” can be viewed and subscribed to at: jitp.info



Parenting and Family Relationships

Your source of well-researched, quality information about families and relationships can be found at parenting.extension.wisc.edu/



This directory was compiled and distributed by

*Extension Price County
Normal Building, Room 240
104 S. Eyder Avenue,
Phillips, WI 54555
(715) 339-2555*



Extension

UNIVERSITY OF WISCONSIN-MADISON
PRICE COUNTY

An EEO/Affirmative Action employer, University of Wisconsin-Extension provides equal opportunities in employment and programming, including Title IX and ADA requirements.